

Floor Plans for KinKell Byre:

The Kinkell Byre, is a highly versatile complex of function venues, an ideal wedding venue or event venue, converted from existing byres and stables at Kinkell Farm.

The Byre:

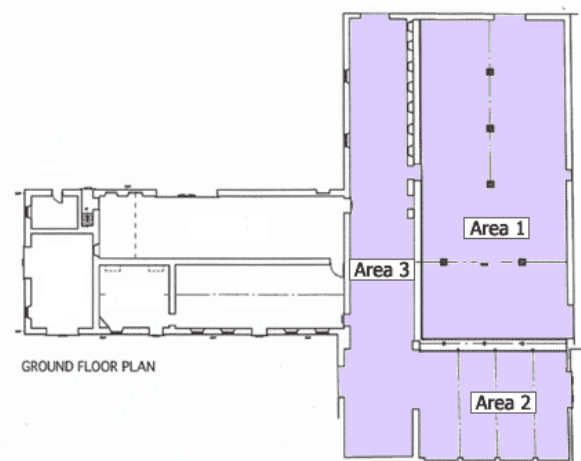
What was once the home to the farm's livestock has now been converted to provide a versatile function venue, catering for all tastes.

For dinners, the main dance floor (area 1) can be used on its own to seat between 200 to 300 at round tables, and even more at rectangular tables.

If the two adjacent buildings (areas 2 and 3) are also used up to a further 200-250 guests can be accommodated at round tables.

The 4,500 square foot wooden dancefloor (area 1) is set at a lower level, with access to areas 2 and 3 by handrailed steps.

For concerts, speeches or fashion shows, a stage can be extended onto/into the dancefloor area, making the space fully customisable to suit your event.



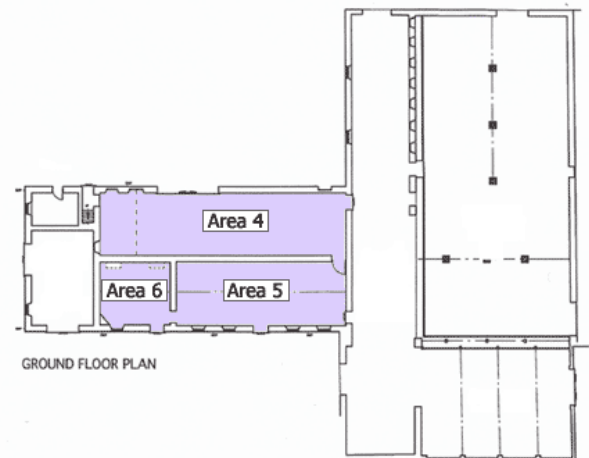
The Stables:

The former stables can be used as catering areas for functions in the main spaces or alternatively they can be used independently as a venue for smaller functions of 20 – 100 guests.

At Kinkell Byre we can accommodate almost any type of event.

Direct access to the external courtyard makes summer hog roasts and barbecues very convenient, even with internal seating.

Area 4 provides a space for a second dance floor / performance area.



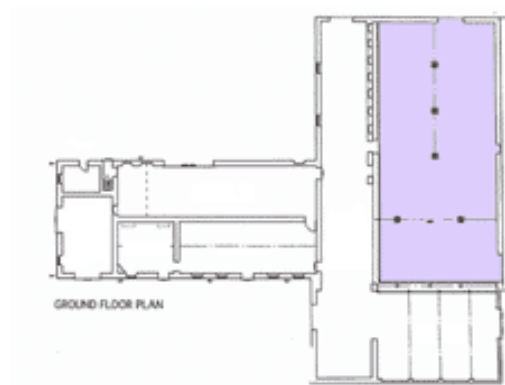
Kinkell Byre Technical Specifications for individual rooms:

- Electricity: 63Amp and 13Amp supply available.
- Space heaters supplied.
- Kitchen facilities can be provided depending on size/type of function.
- A toilet block has been added catering for up to 800 people and accessible from either inside the buildings or from the outside. You get all the aesthetic appeal of a rustic venue, with the bonus of lovely modern facilities for your guests.
- Advanced lighting equipment not supplied

Below we have included a ground floor plan and some basic technical specifications for each of the areas that can be used at Kinkell Byre:

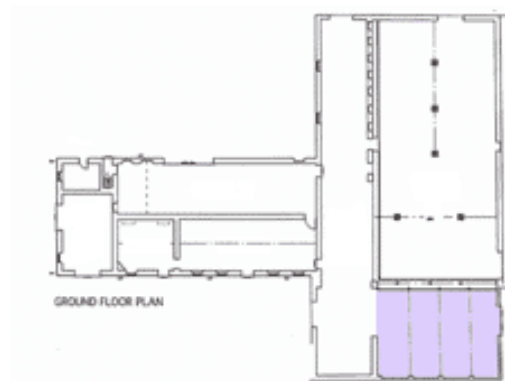
Area 1:

31 m x 14 m (434 m²).
Approx. 4,500 sq ft
This area is floored in wood



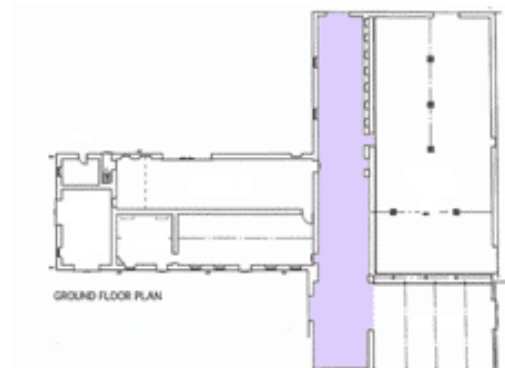
Area 2:

14.5 m x 10.5 m (152.5 m²).
Approx. 1,600 sq ft



Area 3:

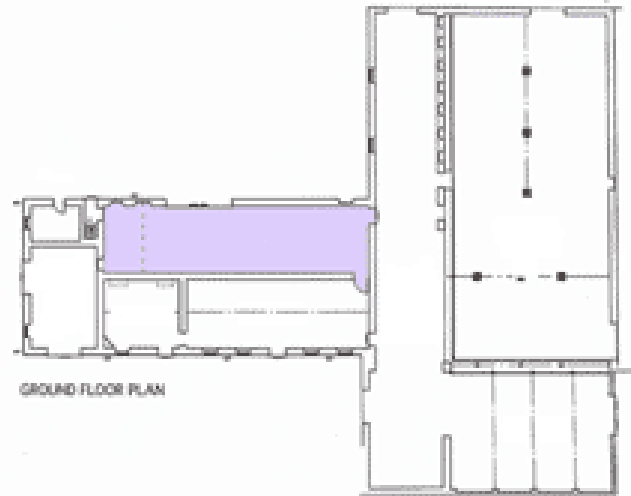
41 m x 5.5 m (225.5 m²).
Approx. 2,400 sq ft



Area 4:

23.5 m x 6 m (141 m²).

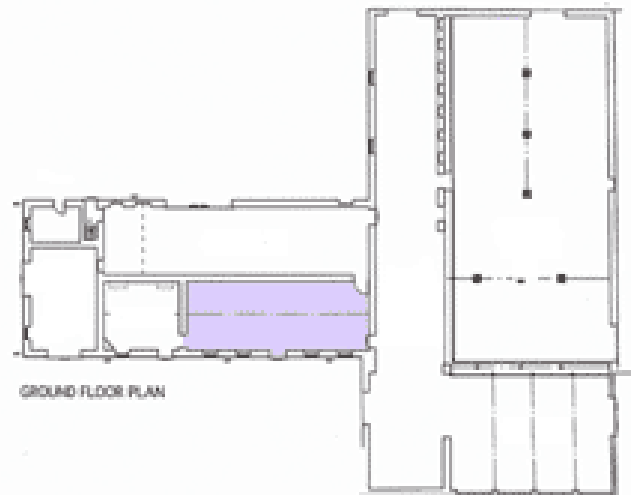
Approx. 1500 sq ft



Area 5:

16.5 m x 6 m (99 m²).

Approx. 1000 sq ft



Area 6:

6.5 m x 6 m (39 m²).

Approx. 400 sq ft

